



28.5 Volt Stationary DC Power Supply For Aircraft Maintenance, Avionics, and Test Stands

SMSR Series 100 to 1500Amps

Converts utility power to 28.5 volts DC



The highest quality Aircraft DC Supply on the market today

Current Power LLC is a world leader in the design and manufacturing of the highest quality 28VDC on the market. Close attention to detail in every step of the manufacturing process has led us to build the most reliable and best looking equipment in the industry. All of our models are built around aircraft requirements without skimping on conductive materials and transformer sizing yielding the best voltage holding capability in the industry during aircraft starts or testing components. The units are designed around the users and pilots with easy to read volt and amp meters. They also include a safe and easy way to set the maximum current limit using a push button. Operators feel at ease that the 28.5 volts will be maintained and the current delivered during starting will not exceed aircraft or parts testing specifications.

CURRENT POWER LLC

1449 Jupiter Park Drive, STE 19, Jupiter FL 33458

PH: 203-994-8408

www.CurrentPowerLLC.com sales@currentpower.biz

© 2002-2013 Current Power LLC. All rights reserved

28.5 Volt Stationary DC Power Supply SMSR Series 100 to 1500 Amp

SPECIAL FEATURES

- Heavy Duty Industrial enclosure with continuous welded finish
- Optional Heavy duty floor stand with baked powder coated finish.
- Four adjustable leveling floor glides
- All welds are ground smooth for smooth furniture like appearance



- Input voltage is reconnectable for any voltage ranging from 208V to 575V, 3phase, 50 or 60 hertz. The power supply can be field adjusted for any hangar voltage worldwide.
- AC line disconnect with industrial grade circuit breaker and through door actuator; equipped with Lockout and Tagout to meet safety requirements.
- Thermal protection for transformer and semiconductors.



- Recessed operator control panel.
- Long Life, high intensity LED status lights.
- DC On/Off switch electronically controls clean power and connection and disconnection to the aircraft or test load



Exclusive patent pending push-to-set **Smart Current Limit** allows the user to set the exact desired current limit by pushing a button and rotating the current adjustment knob to the preferred current limit. The meter will display your exact setting while the button is held. You can then use the dial lock lever for added protection against accidental movement.

Dial Knob Lock

CURRENT POWER LLC

1449 Jupiter Park Drive, STE 19, Jupiter FL 33458

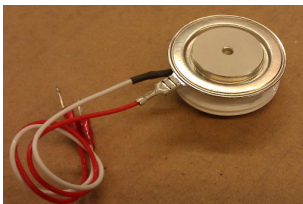
PH: 203-994-8408

www.CurrentPowerLLC.com sales@currentpower.biz

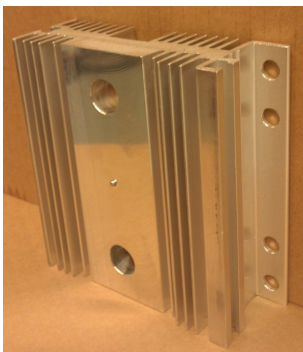
© 2002-2013 Current Power LLC. All rights reserved

28.5 Volt Stationary DC Power Supply SMSR Series 100 to 1500 Amp

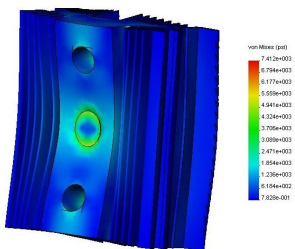
STANDARD FEATURES (cont)



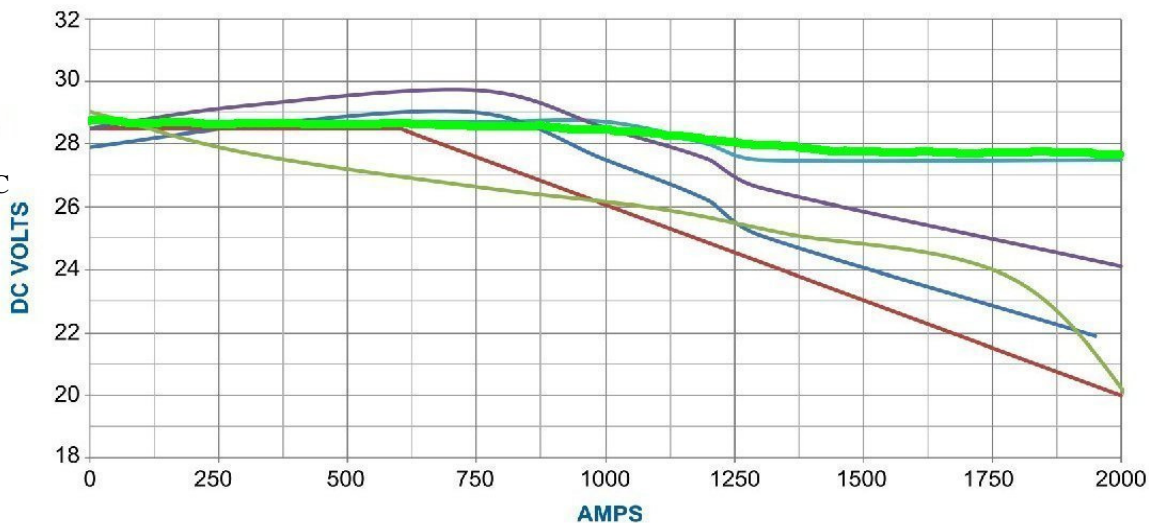
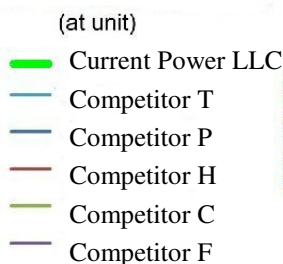
- Hermetically sealed semiconductors (SCR) for long life in harsh environments.



- Current Power does not skimp on heat-sink or transformer materials. This allows us to reduce the airflow necessary to cool the GPU. Our competitors do the opposite; they increase the airflow to force cool smaller components thus saving money. This has the negative effect of higher noise, stressing electrical components and pulling contaminants and moisture into the GPU. This design method also one of the he causes of voltage dropping during high current loads.



- Cooling fans are ball bearing type vs. sleeve bearing type.
- Current Power uses all of the latest simulation software for finite element analyses. Allows for material flex and thermodynamics as shown here.



DC Output Chart: Below is a published DC output graph of Aircraft current draw (Amp's) VS DC output voltage. Current Power has overlaid our GPU graph to give you a comparison that can help our customers with their buying decisions. As you can see, the Current Power GPU holds the correct output voltage better than any of our competitors.

28.5 Volt Stationary DC Power Supply Unit

SMSR Series 100 Amp to 1500 Amps

SPECIFICATIONS

- 2 year warranty
- Input voltage from 208 to 575 VAC 3 Phase 50-60HZ, must be specified at time of order
- Output voltage adjustment range from 24 to 32 volts DC
- Continuous Power rating
- Smart Current Limit: Visual set and lock desired current limit
- Meets MIL-STD-704 for Aircraft Power Quality Output
- Voltage regulation 1%
- DC output voltage 2% ripple
- Output current regulation 1%
- Current limit control: True 0 to 100%
- AC line disconnects with industrial grade circuit breaker and through door actuator; equipped with Lockout and Tagout for safety
- Input Power Monitoring: Input phase loss detection, under voltage
- Hermetically sealed semiconductors with large aluminum heat sinks
- Thermal protection for transformer and semiconductors
- Heavy duty floor stand optional
- Heavy duty indoor enclosure with baked powder coated finish IP54 enclosure
- Quiet operation 50 dB @ continuous current rating, 58dB at peak current
- Size 30”L x 30”W x 48”H without cable hangers and floor stand
- Size 49.5”L x 30”W x 48”H with cable hangers and floor stand

MODELS

- **SMSR-100-28:** 100 Amps at 28.5 Volts Continuous, 200 Amps peak
- **SMSR-200-28:** 200 Amps at 28.5 Volts Continuous, 300 Amps peak
- **SMSR-400-28:** 400 Amps at 28.5 Volts Continuous, 1200 Amps peak
- **SMSR-600-28:** 600 Amps at 28.5 Volts Continuous, 2000 Amps peak
- **SMSR-750-28:** 750 Amps at 28.5 Volts Continuous, 2000 Amps peak
- **SMSR-1000-28:** 1000 Amps at 28.5 Volts Continuous, 2000 Amps peak
- **SMSR-1500-28:** 1500 Amps at 28.5 Volts Continuous, 2000 Amps peak

OPTIONS

- Input cable in any length with or without plug (please specify length and operating voltage)
- Aircraft cable with 28.5V oval plug AN225 in any length (please specify length)
- Aircraft cable with 28.5V oval plug AN225 in any length with remote voltage sensing (please specify length)
- Cable Hangers
- Digital Meter Package
- E-Stop terminal, allows for a remote E-Stop in a remote area
- Remote DC ON/Off, to control DC power from a remote location
- Remote Voltage sensing, allows voltage regulation to a panel board or distant load
- Isolated Interface for voltage and current control from a PLC, 4-20ma, 0-5vdc, 0-10vdc
- Ground leakage detector, to confirm isolation on the DC output
- Heavy duty floor stand
- CE Mark compliance for Europe
- Other ratings and voltages available
- Any 3 Phase AC input voltage and frequency (50,60, and 400HZ) worldwide is available
- Please see our complete mobile GPU's that we offer **MSR Series**

CURRENT POWER LLC

1449 Jupiter Park Drive, STE 19, Jupiter FL 33458

PH: 203-994-8408

www.CurrentPowerLLC.com sales@currentpower.biz

© 2002-2013 Current Power LLC. All rights reserved